

Below are the photos of the Hydraulic head nut for the S4000.

Notes for improvements and suggestions for the installation are:

1. Supply a ring spanner for the hydraulic hose nipple for tightening into the head nut.
2. The Head nut requires lifting points as per the sacrificial plate
3. Sacrificial Plate needs to go over the top of the Hydraulic head nut and up to the shaft so it can have silicone seal between the sacrificial plate and shaft to stop dust and moisture entering the thread.
4. State the oil type and amount required for the pump in the operating instructions.
5. This head nut stroked 6mm for 600bar.
6. Require pressures to be worked out for future Hydraulic head nuts as these are not stated in the crusher manual.
7. Burn ring is not required when using the Hydraulic head nut

Mantle



Head



Lowering head nut onto Mantle



Tightening head nut with spanner supplied



Head nut in position



Head nut in position



Hydraulic pump and hose



Hydraulic hose connected



Ready to start applying pressure



Head nut starting to move



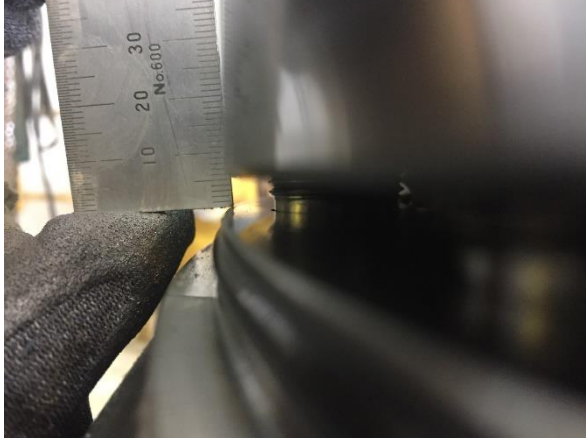
Gap in head nut



600 bar on gauge



Checking measurement of gap



Checking other side for even



Jacking screws tightened in sequence



Releasing pump nipple



Sacrificial plate lowered onto head nut



Sacrificial plate in position



Bolt and inner race covered in silicone



Hydraulic hose, test certificates and operating instructions



Pump packed away

