

## Use of HydraNut increases production in Quarrying

Technofast HydraNut hydraulically actuated nuts have earned the Australian Quarrying Industry many thousands of dollars in reduced downtime and increased production.

They are used on the half joint of gyratory crushers and shovels to reduce the downtime during routine and emergency maintenance work.

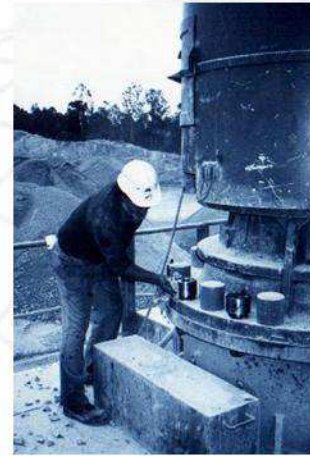
Because the HydraNut directly tensions the bolt, there is no damage to the abutting faces and the thread interfaces. Preventing nut seizure.

HydraNuts are a direct replacement for existing nuts and are simply fitted using a hydraulic pump.

A known load is applied to the bolts and therefore there is no danger of either over or under loading of the joint.

Any critical bolting application will benefit from use of HydraNut, which has been used for many years to solve fastening problems.

Especially useful in confined spaces (floor space of shovel shown left).



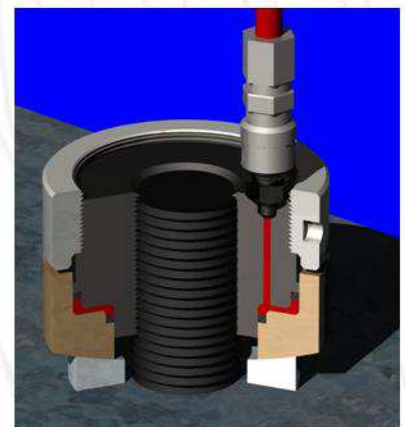
## How does it work?

The HydraNut is screwed into position onto the bolt. The quick connect coupling is connected and pressure is applied by a hydraulic pump. The hydraulic force applied equals the pressure times the hydraulic area and is therefore a known load. The bolt is stretched and the locking is wound down to seat on the

top face of the piston. The hydraulic pressure is released and the hose is disconnected. HydraNut takes only minutes to tension any size of bolt.

### Benefits

- **Fast**
- **Accurate**
- **Simple**
- **Safe**



  
**technofast**  
precision engineered solutions

Technofast  
Industries  
12 Archimedes St,  
Darra Qld 4076  
Brisbane Australia

Tel: +61 7 3375 1431  
Fax: +61 7 3375 9094

Email: [sales@technofast.com.au](mailto:sales@technofast.com.au)