



LiftaJac

The Technofast LiftaJac typically utilises high hydraulic pressure to generate high forces for lifting large loads. Technofast lifting jacks come in various sizes and configurations. The compact design of the Technofast lifting jack yields optimal load while maintaining minimal size and weight. Whether it's a double acting, single acting, hollow or solid, short stroke or long stroke, Technofast can ensure that there will be a design that suits your application.

TOP CAP

Contact surface.

EYE BOLTS

to assist in lifting the tool to desired location. Removable/ side mounted for convenience.

HYDRAULIC NIPPLE 2

(Double Acting models)

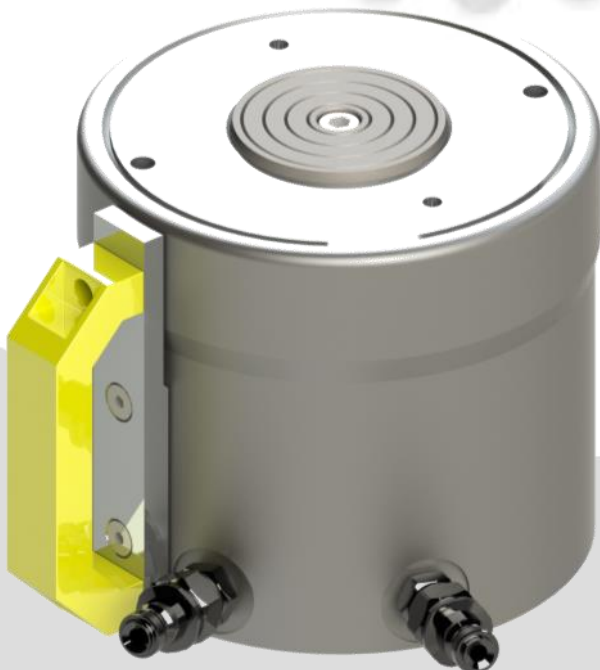
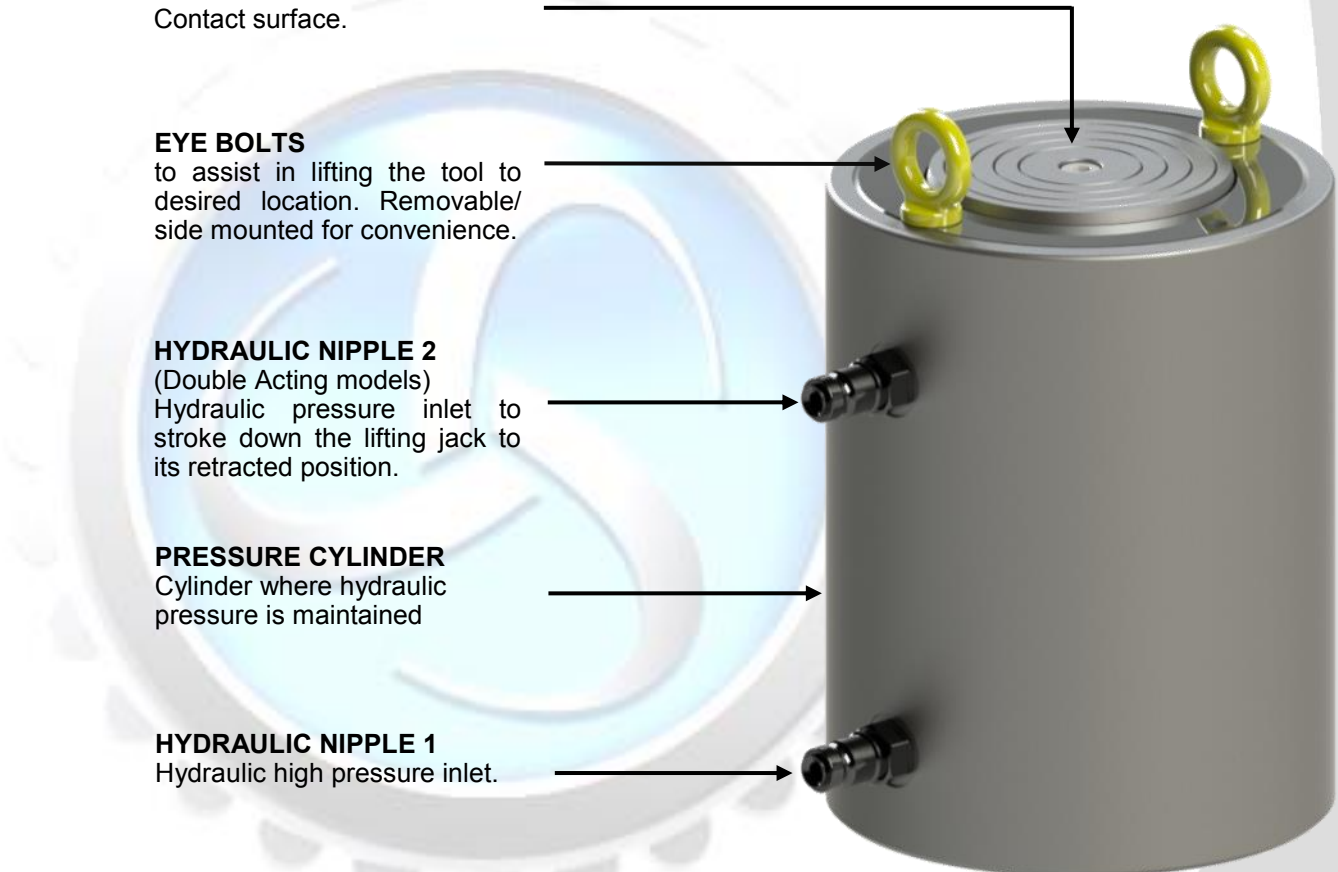
Hydraulic pressure inlet to stroke down the lifting jack to its retracted position.

PRESSURE CYLINDER

Cylinder where hydraulic pressure is maintained

HYDRAULIC NIPPLE 1

Hydraulic high pressure inlet.



- ◆ Available in single acting or double acting configurations
- ◆ Custom finishes available upon request
- ◆ High strength alloy steels to ensure safety and durability
- ◆ Eyebolts or handles available for easy manoeuvring of the tool
- ◆ Available in a wide range of sizes, load capacity, and stroke lengths