

# CASE STUDY: CS-26

## Quarry

<b>Site:</b>	<b>New South Wales Quarry</b>
<b>Application:</b>	<b>Terex Jaques G35DA236 Crusher Mantle Nut</b>
<b>Original Set-Up:</b>	Standard mantle nut supplied with machine which was tightened with large flogging spanner and removal was by oxy cutting the burn ring below the nut to release the pressure
<b>Issues Experienced:</b>	<ul style="list-style-type: none"><li>• No Control of bolt load</li><li>• Use of large hammers and flogging spanner dangerous</li><li>• Cutting of burn ring is hazardous and requires replacement after each use</li><li>• Physically demanding</li></ul>
<b>Technofast Product Used:</b>	Special EziTite® Hydraulic Head Nut
<b>Benefits Experienced:</b>	<ul style="list-style-type: none"><li>• Easy installation and handling</li><li>• Removed the need for flogging spanner</li><li>• Burn ring no longer required although used for mounting purposes</li><li>• Sacrificial cover provided (one complete piece)</li><li>• Minimal physical effort required</li></ul>
<b>Installation Time:</b>	Old Method = 3-4 hours (2-3 personnel) New Method = 30 minutes (2 personnel)
	<b>Time Saving = 2 hour and 30 minutes</b>
<b>Feedback Received:</b>	“The use of the EziTite® Head Nut has made the job much faster and simpler and also eliminated many OH&S concerns with the previous method” <i>Maintenance Supervisor</i>

### TECHNOFAST INDUSTRIES PTY LTD

2-4 Calcium Court CRESTMEAD QLD 4132  
Po Box 888 BROWNS PLAINS BC QLD 4118  
P: 07 3803 6550  
E : sales@technofast.com

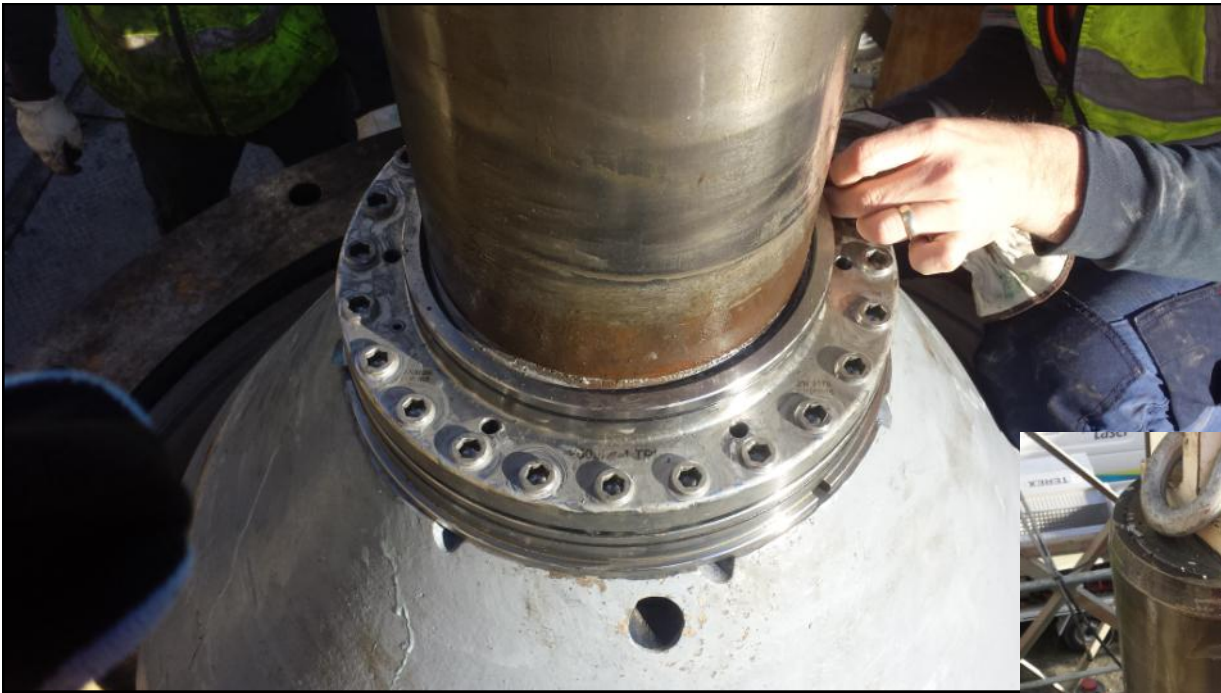
ABN: 27 088 349 044

FM233-CS26 (Rev-2)



# CASE STUDY: CS-26 Quarry

## Application Pictures



EziTite® Hydraulic Head Nut installed before sacrificial cover is installed.



Sacrificial cover installed and the unit is now ready for service.

### TECHNOFAST INDUSTRIES PTY LTD

2-4 Calcium Court CRESTMEAD QLD 4132  
Po Box 888 BROWNS PLAINS BC QLD 4118  
P: 07 3803 6550  
E : sales@technofast.com

ABN: 27 088 349 044

FM233-CS26 (Rev-2)