

CASE STUDY: CS-10

Steel Mill

- Site:** OneSteel Whyalla
- Application:** 3UR Rougher Mill Cheek Plates
- Original Set-Up:** Wedges and hammer used to adjust
- Issues Experienced:**
- Workers had to enter hazardous environment
 - Use of large hammers and wedges dangerous
 - Wedges often became jammed during removal
 - Physically demanding
- Technofast Product Used:** Technofast in conjunction with OneSteel Engineers designed a complete new system for making adjustments which consists of two hydraulic cylinder mounted to the Rougher Mill.
- Benefits Experienced:**
- Easy installation and handling
 - Removed the need for flogging spanner
 - Adjustments can now be made during operation without the need for works to enter hazardous environment
 - Minimal physical effort required
- Installation Time:** Old Method = 1 hour (2-3 personnel)
New Method = 30 minutes (2 personnel)
- Time Saving = 30 minutes**
- Feedback Received:** With changing market conditions arising from the global financial crisis, Steel Products has seen a big focus on reducing delays, reducing waste and improving product quality. The conversion of the 3UR Roughing Mill cheek plates at a unique hydraulic clamping arrangement has delivered many improvements to Steel Products, such as reducing roll change times, reducing operational delays. Reducing section control delays and improving product dimensional quality. *Mechanical Reliability Engineer for Steel Products*

TECHNOFAST INDUSTRIES PTY LTD

2-4 Calcium Court CRESTMEAD QLD 4132
Po Box 888 BROWNS PLAINS BC QLD 4118
P: 07 3803 6550
E : sales@technofast.com

ABN: 27 088 349 044

FM233-CS010 (Rev-2)



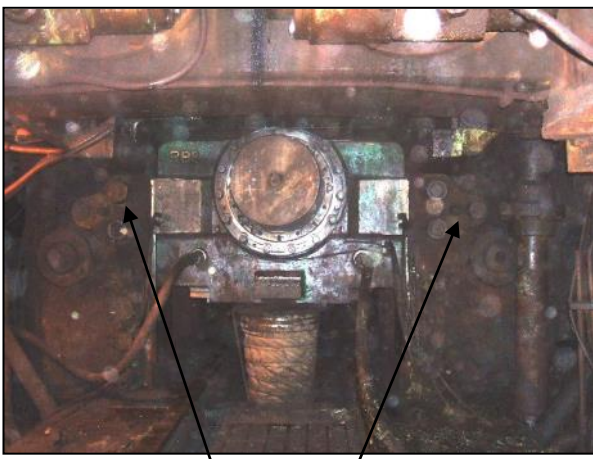
CASE STUDY: CS-10

Steel Mill

Application Pictures



New system installed and in operation



Old system locations



Old cheek plates

TECHNOFAST INDUSTRIES PTY LTD
2-4 Calcium Court CRESTMEAD QLD 4132
Po Box 888 BROWNS PLAINS BC QLD 4118
P: 07 3803 6550
E : sales@technofast.com

ABN: 27 088 349 044

FM233-CS010 (Rev-2)